



**MATERIAL**

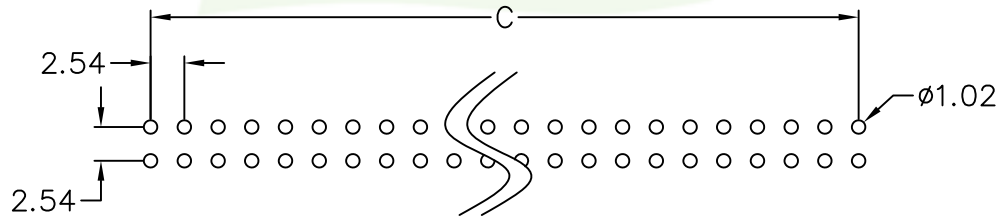
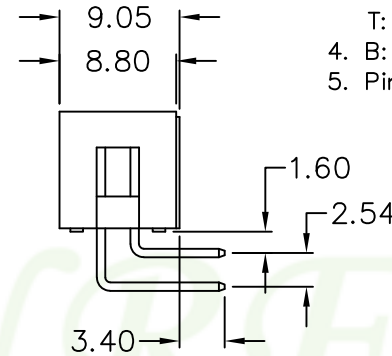
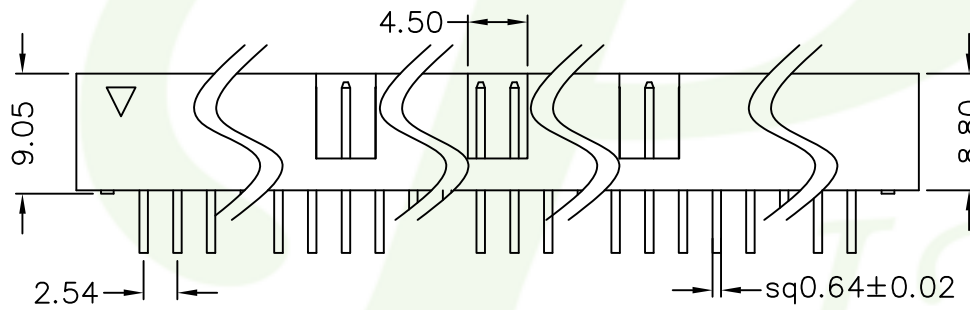
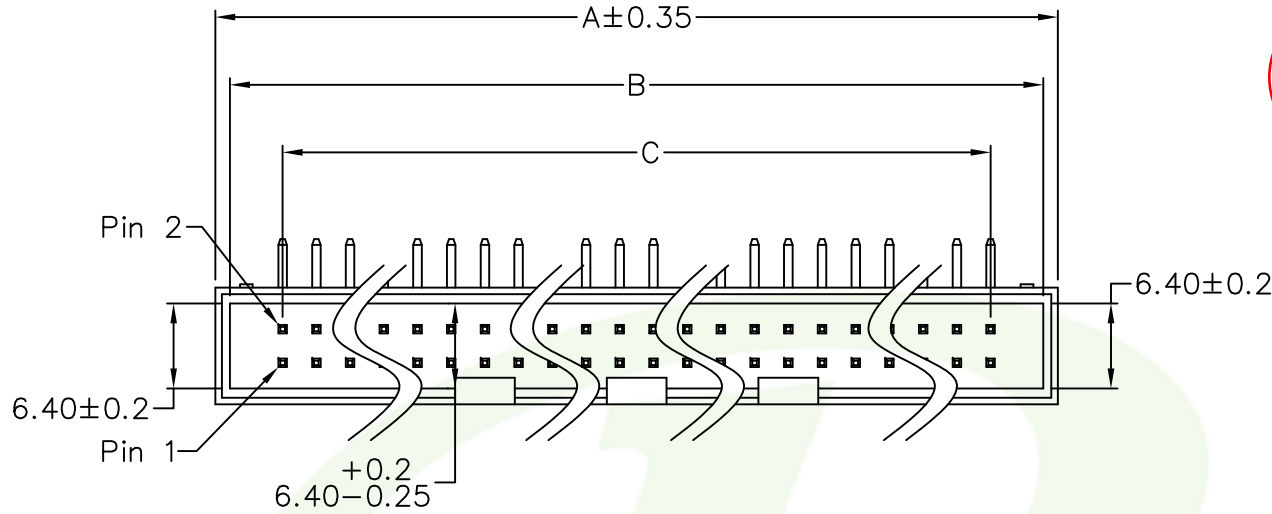
Insulator : Thermoplastic High Temp UL94-V0  
Contact Pin : Brass

**SPECIFICATION**

Current Rate : 3 AMP  
Insulation Resistance : 5000MΩMin. at DC 500V  
Contact Resistance : 20mΩMax. at DC 100mA  
Dielectric Voltage : AC 500V for one minute

511-x 0- xx x x xx  
1 2 3 4 5

1. 7: Green Product
- 9: Green Product High Temp
2. No. of contacts
3. G: Gold flash
- S: Selective
- T: Tin plated
4. B: Black Insulator
5. Pinrex internal code.



Recommended P.C.B Layout

6~56P 為單個缺口  
60~64P 為三個缺口

☆ Special Type

POLES	DIM A	DIM B	DIM C
☆ 6	12.66	10.26	5.08
6	15.20	12.80	5.08
☆ 8	15.20	12.80	7.62
8	17.78	15.48	7.62
10	20.30	18.10	10.16
12	22.84	20.64	12.70
14	25.38	23.18	15.24
16	27.92	25.72	17.78
20	33.00	30.80	22.86
24	38.08	35.88	27.94
26	40.62	38.42	30.48
30	45.70	43.50	35.56
34	50.80	48.58	40.64
40	58.40	56.20	48.26
44	63.48	61.28	53.34
50	71.10	68.90	60.96
56	78.72	76.52	68.58
60	83.80	81.60	73.66
64	88.88	86.68	78.74

		TOLERANCE		UNITS : mm		OLD PART NO.		TITLE		頻銳科技股份有限公司 PINREX TECHNOLOGY CORP.
		.0 =±.30 .00 =±.20 .000 =±.XXX .0000=±. ANG.=±3'		SCALE NONE SIZE A4		DRAWER 姜文慧 CHECK 李劍		BOX HEADER 2.54*2.54mm, RIGHT ANGLE TYPE		
A	RELEASE	2020/11/09		SHEET 1 OF 1		REV. A		NEW PART NO. 511-x0-xxxxxx		DRAW NO. 511-x0-xxxxxx (網頁專用圖)
REV.	DESCRIPTION	DATE		SCALE NONE SIZE A4		SHEET 1 OF 1		APP'D 李劍		